



Edgware & Hendon
Reform Synagogue
ק"ק לדור ודור

EHRS GETS THE POINT!

**An information evening for parents on collecting CRP
points for Primary Jewish school applications 25/26**

Why do we collect?

The CRP is a method of establishing whether the child/family practices the three pillars of the Jewish faith. Prayer, education and acts of kindness.

Collecting CRP points allows you to prove that you are eligible for a faith place at the schools you are applying to that require a completed CRP form.

Jewish schools set the admissions policy and confirm which applicants have satisfied the Jewish practice criteria. Those wishing to be considered as priority applicants for available places need to obtain a certificate establishing religious practice (CRP), based on the child's synagogue attendance, Jewish education and/or family communal activity.



[Useful website: School Admissions - Partnerships for Jewish Schools \(pajes.org.uk\)](http://pajes.org.uk)



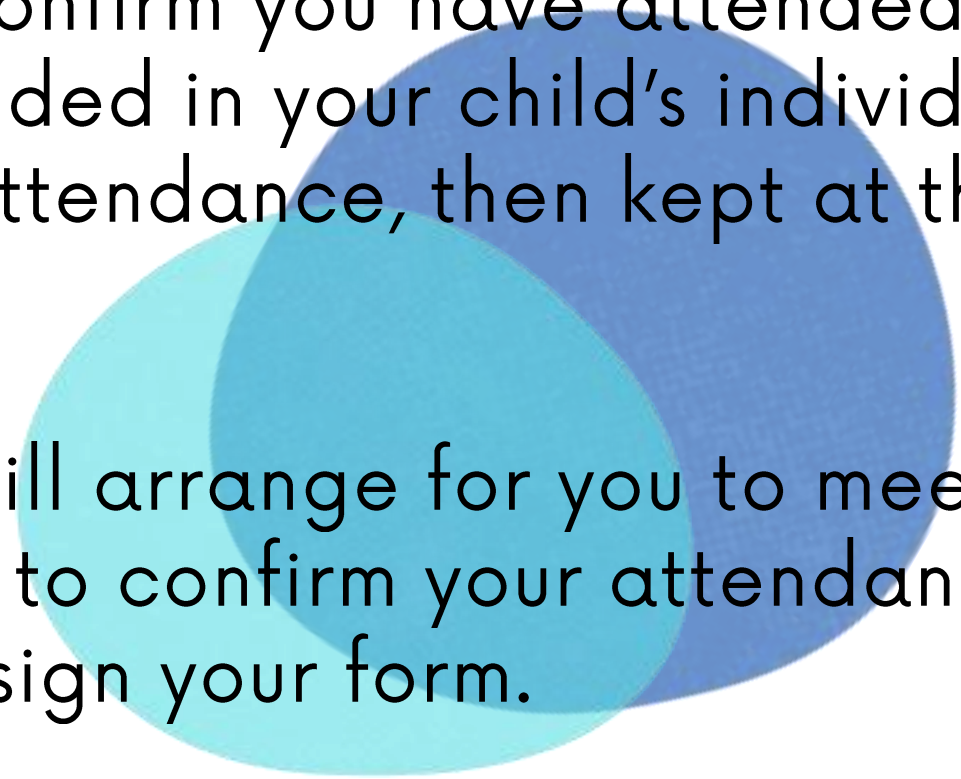
How does it work?

Jewish day schools all require the completion of a CRP (Certificate of Religious Practice) form for admission which is dependent on collecting points for service attendance, Jewish education or volunteering in the Jewish community. Each school has its own unique requirements

Registering - We ask you to register by emailing us at education@ehrs.uk that you are collecting points through EHRS and we will support you by assigning you a Shabbat Passport.

Attendance - We are very happy to help you collect CRP points to confirm you have attended services at EHRS. We will ask you to collect stickers for services attended in your child's individual Shabbat Passport. The Passport will be assigned to you at your first attendance, then kept at the Shul for safe keeping!

Signing off - The final stage is to get back in touch with us and we will arrange for you to meet with a member of our clergy team who will use this Shabbat Passport to confirm your attendances required by the schools and will be delighted to speak with you and sign your form.





Edgware & Hendon
Reform Synagogue
ק"ק לדור ודור

Shabbat Passport



My Name:

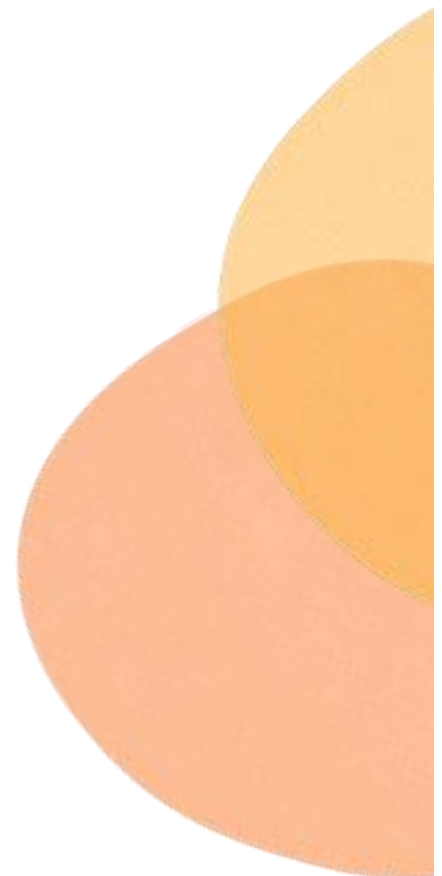
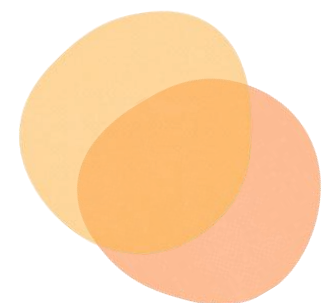
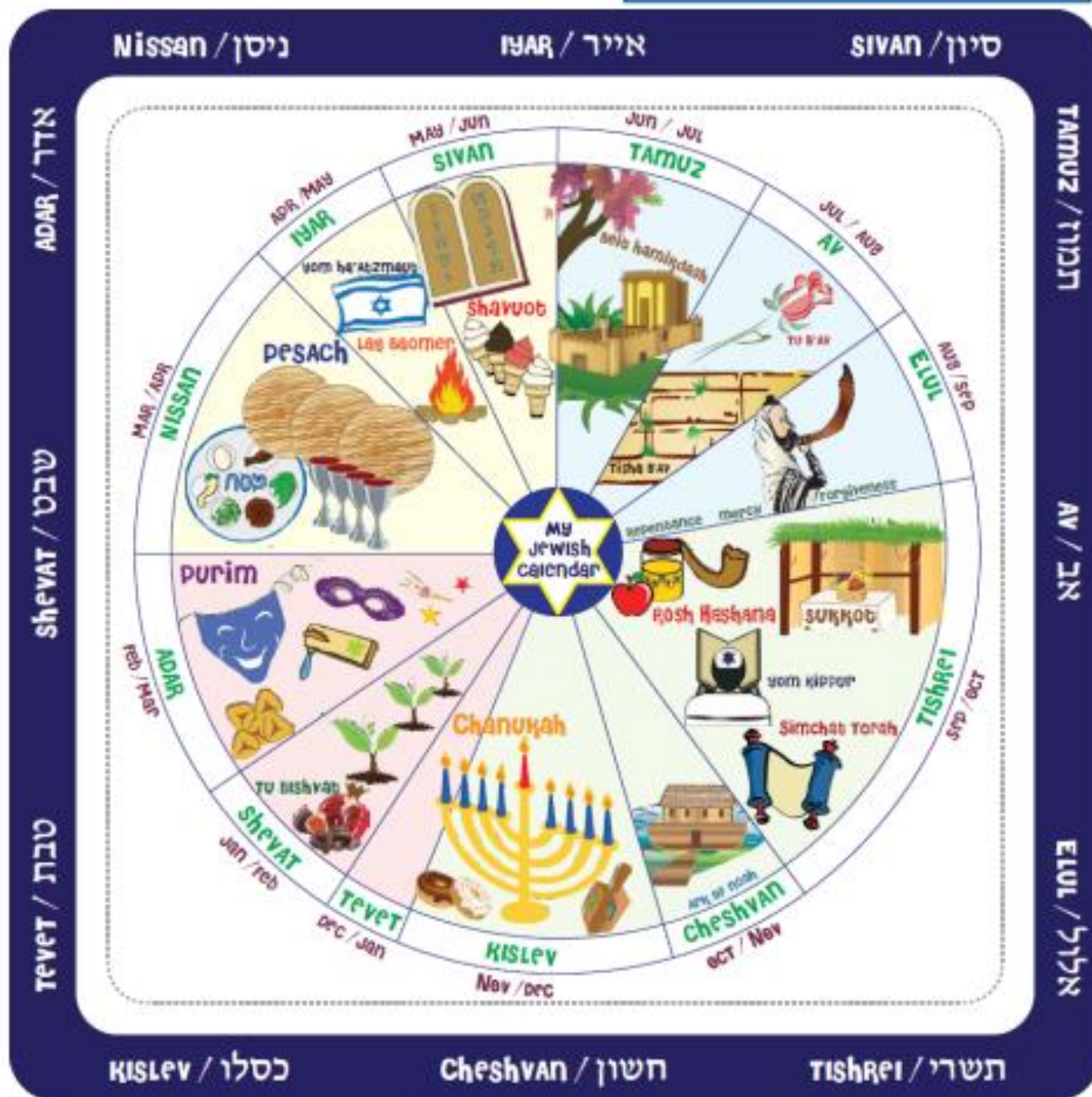
My family E-mail:

This Year is:

Names of the weekly Torah portions

First portion in a book of the Torah

A portion that in some years is joined to another portion



Where do I collect?

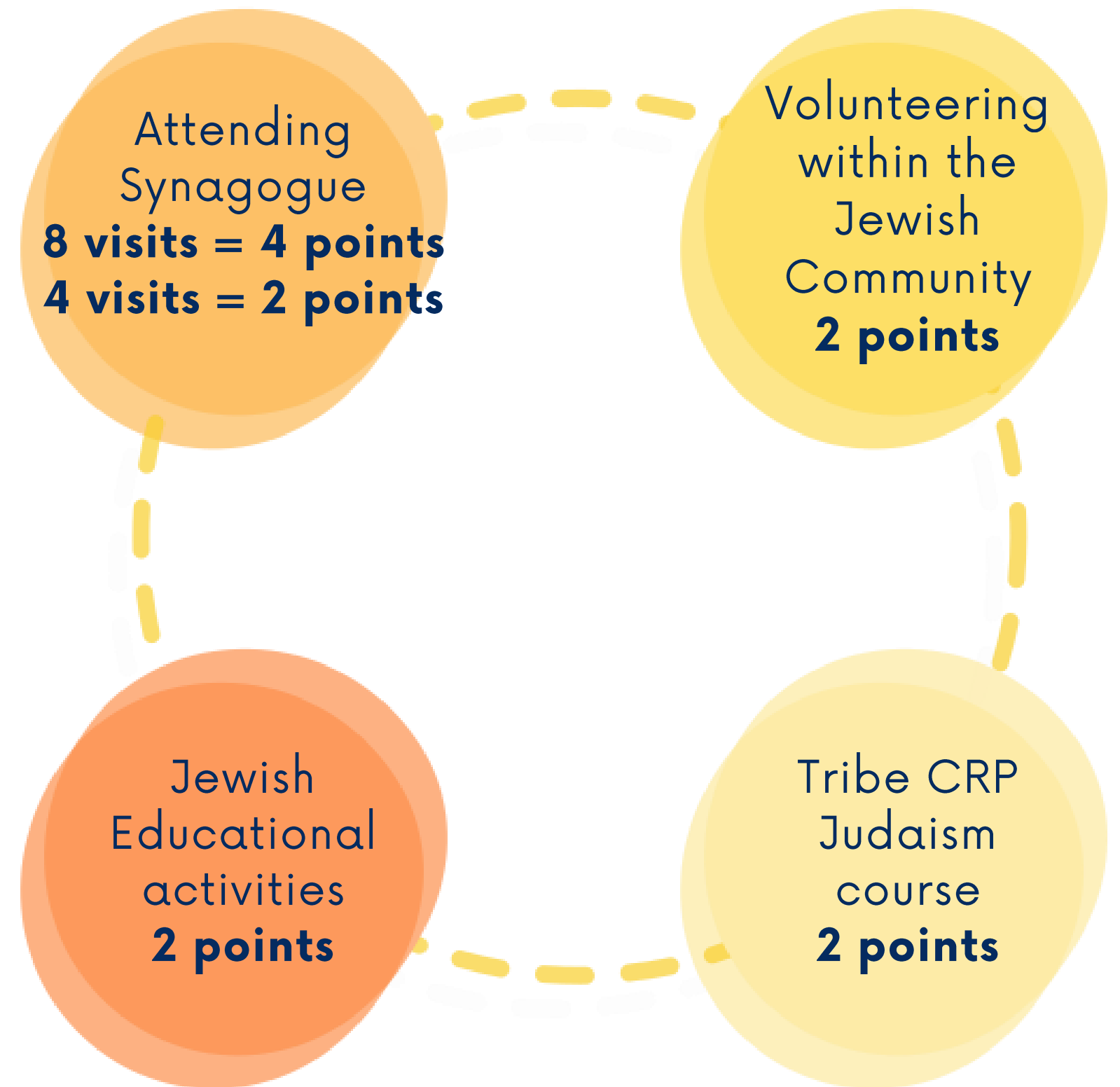
Please note some schools ask for 4 points, and some ask for 6 points.

It is important that you check the CRP requirements, including the number of points needed for each school to which you are applying.

Not all schools have adopted the same CRP form.

Points can be collected from any of the following categories. All choices are optional.

There is no benefit from earning more than the required amount of points.



When can I collect?



Please note that Admissions and CRP requirements differ from school to school.

It is very important to check each school's website for their admissions policy to understand what is required.

United Schools CRP Timetable

Date	Reception/Primary application	Year 7 applications	Sixth Form applications
01/11/2022	Earliest date for participating in Volunteering and Jewish Education projects		
05/04/2024	Recording shul attendance commences		
June - July 2024	Tribe CRP Judaism Course at Borehamwood Shul. See Tribe website for more details		
26/10/2024		Last week to record shul attendance	
31/10/2024		Last date for Volunteering and participation on Jewish Education programmes	
31/10/2024		Deadline for applications to schools	
11/01/2025	Last week to record shul attendance		Last week to record shul attendance
15/01/2025	Last date for Volunteering and participation on Jewish Education programmes		Last date for Volunteering and participation on Jewish Education programmes
15/01/2025	Deadline for applications to schools		
Late Jan / Early Feb 2025			Deadline for applications to Sixth Form (check with the school you are applying to)
February / April 2025	Places offered in February		Conditional places offered in April

The Schools Criteria

All Nursery places

Apply directly to the school

(No points are needed for Nagila Nursery and attending will earn you points for Reception).

Reception Places

CRP forms go direct to the school, but you will also be required to complete a borough specific school application. These are due by 15 January 2024.

You need to complete THREE forms

1. Common Application Form (CAF) from your local authority website between 1 September and 31 October
2. Supplementary Information Form (SIF) available on school website
3. Certificate of Religious Practice (CRP) available on school website



GOOD TO KNOW!

None of the schools you apply to will know the order in which you rank them. They play no part in the selection process, that is the Local Authority only.

Don't forget to make copies of all the forms you submit, keep a look out for confirmation emails and keep your log in reference safe!

Clore Shalom

Priority 1 - Applicants who have attended a sponsoring synagogue, ie Liberal, Masorti or Reform **8 times in the 12 months** prior to the date of application, except on any Jewish festival other than Shabbat.

Priority 1 - Sibling / Child of a staff member We have attended the synagogue(s) listed below **4 times in the 12 months** prior to the date of application, except on any Jewish festival other than Shabbat.

Priority 2 - Applicants who have not attended a sponsoring synagogue, e.g. United We have attended the synagogue(s) listed below **4 times in the 12 months** prior to the date of application, except on any Jewish festival other than Shabbat.

<https://primarysite-prod-sorted.s3.amazonaws.com/clore-shalom-school/UploadedDocument/5dd722f9-28b9-4ea6-87cc-4363b5c01fab/determined-certificate-of-religious-practice-2025-2026.pdf>

Akiva

- The overriding principle behind the school's admission arrangements is that they should give priority to families with an on-going commitment to Progressive Judaism, for whom this is the only Jewish school that specifically caters for their Jewish needs.
- PRIORITY for Shabbat attendance by either the parent or the child on at least 15 separate Shabbatot. Between 1st May 2024 and 31st December 2024 at either one or more synagogues that are members of the Movement for Reform Judaism or of Liberal Judaism or New North London Synagogue.
- At least 7 Shabbatot between 1st May 2024 and 31st December 2024 at either one or more synagogues that are members of the Movement for Reform Judaism or of Liberal Judaism or New North London Synagogue
- Attendance of the child for a continuous period of at least two terms leading up to 31st December 2024 at a nursery run by or under the auspices of a Qualifying Synagogue.

Alma

We want everybody who supports our ethos, who fulfils the Jewish practice criteria and who wants to come to the school to have a chance to join our community, regardless of where they live. We use a ballot system to allocate the faith-based places, so that families who live further away have just as much chance of securing a place in the school as families who live close by.

All the criteria below have equal weight, only need to meet 1 criteria:


- 1. Attendance by a parent/legal guardian and their child at a **minimum of 7 synagogue services in the 12 months** before the closing date for admissions
- 2. A child's **enrolment in formal Jewish education** (either at nursery or pre-school having a Jewish character) for at least 4 months in the 12 months before
- 3. A parent/legal guardian's regular (at least monthly) **involvement as a volunteer in any Jewish communal, charitable or welfare activity** of at least a year's duration in the 2 years before the closing date for admissions;
- 4. A parent/legal guardian's involvement on at least **7 individual occurrences either in organised Jewish learning** or organised Jewish community activities in the year before.

Activities could include (but are not limited to):

- Synagogues: any courses or one-off learning or cultural events
- Jewish Book Week: attending a session(s)
- London Jewish Cultural Centre: attending any of their courses or 1-off events
- SpiroArk: attending any of their courses or 1-off events; □ London School of Jewish Studies: attending any of their courses or 1-off events
- Limmud: attending the Limmud Conference, LimmudFest, or any of the regional Day Limmud events
- JW3 for London: attending any of their 1-off events
- Social action organisations – attending events run by or volunteering for any such organisation including (but not limited to) Jewish Council for Racial Equality, Tzedek, Gefiltefest, Mitzvah Day, New Israel Fund, Rene Cassin, Yachad.

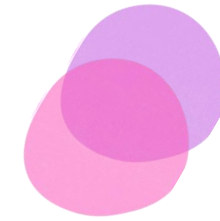


Sinai, Hertsmere, Yavneh, Wolfson Hillel & Rosh Pinner

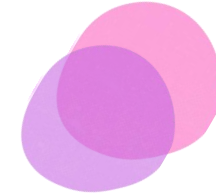
- Need to **collect 4-6 points** overall
 - Yavneh is **6 points** (8 visits = 4 Points, get 2 points more from either Jewish Educational activity, volunteering or the Tribe course)
 - Need a form for each school but can use the same attendance
 - Synagogue attendance - between **4th April 2024 and 15th January 2025** -for dates eligible for attending services on Shabbat. **4 points = 8 visits, 2 points = 4 visits**
 - Jewish educational activities - 1st November 2022 and 15th January 2025 - 6 occasions = 2 points
 - Volunteering - between 1st November 2022 and 15th January 2025 - 12 occasions = 2 points
- 

<https://www.hjps.herts.sch.uk/admissions> - example CRP Form

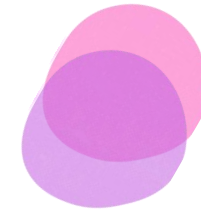
OPPORTUNITIES TO COLLECT WITH EHRS



Shabbat Stay & Play - preschoolers,
Friday mornings 10.30am

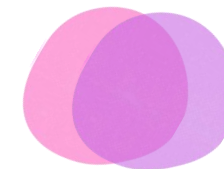


Friday night OR Saturday morning service (6.30pm on a Friday and 10.30am on a Shabbat morning) in person

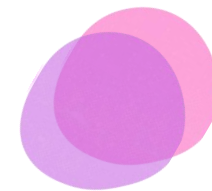


Parallel services that takes place at the synagogue on Shabbat:

- 1st Shabbat of the month - **Torah Time!**, children's service
- 2nd Shabbat of the month, **Shabbat Shirah**, musical family service
- 3rd Shabbat of the month - **Build a Bible**, children's service
- 4th Shabbat of the month - **Shabbat Club**, children's service



Parent volunteering (CST, Uniform groups, Community Care)



Kuddle Up Shabbat (once a month)



Your child's attendance at **Orot**

-  Offering Reform environment and learning, creative and non-judgemental
-  Reform community, from generation to generation
-  Young Families activities and events for all ages
-  Supporting challenges with Jewish school SRE etc.
-  Youth clubs, holiday schemes and uniform groups
-  Live your Jewish values with us at EHRS throughout the year
-  Membership offer for all new young families wishing to join EHRS



EHRS WIDER SUPPORT FOR JEWISH EDUCATION



Q&A

What are the four CRP sections?

1. Shul attendance on Friday night or Shabbat morning
 2. Jewish educational activities
 3. Voluntary Jewish communal, charitable or welfare activities
 4. Completing the Tribe CRP Judaism course, a specially prepared course that is approved by the Office of the Chief Rabbi.
- (Each section of the form has its own specified criteria that must be fulfilled and period of time in which it must be completed)

Where can I get the CRP forms from?

They will be available from each school's office and/or website and the school's local authority

Who needs to have participated in or attended at a particular activity to complete the sections of the form, parent/guardian or child?

For options 1-3 (Shul attendance, Education, Volunteering) at secondary level, only the child's participation is to be recorded, whereas at nursery and primary, it is the child and/or their parent/guardian.

I am not sure about volunteering. What are the options?

You could consider volunteering for a Jewish communal organisation or charity, and many of these organisations are always open to accepting more volunteers. You can also volunteer for your local synagogue, by being on a rota, taking part in their care activities, or through US Chesed. You cannot, however, volunteer for any school you are applying to, for the United Synagogue Head Office or the Office of the Chief Rabbi. For more ideas and suggestions please look at the Jewish Volunteer Network website and the US Chesed pages on the US website.

Examples of options: <https://www.theus.org.uk/category/us-chesed>

What if my child already has a sibling in the school?

Each child must earn their own CRP points for applications to schools.



Q&A

What counts as Jewish Education for the section 'Participating in Jewish Educational activities'?

Attendance at Shiurim, Jewish nurseries, Jewish primary schools and Jewish adult educational courses are all examples of accepted educational activities.

Examples of options: <https://www.theus.org.uk>

What is the Tribe CRP Judaism Course?

The course is now run at Borehamwood Shul by Tribe facilitators and the community leaders. The course is open to all applicants from any community. It consists of six sessions of 45 minutes, covering topics relevant to Jewish customs and practices, festivals, kashrut, etc. All six sessions need to be completed in order to satisfy this section of the CRP form. For primary applications, the parent/guardian must attend the course, and for secondary, the parent/guardian and child should attend.

When can I collect points from attending shul?

You can collect points from attending shul on a Friday night OR Shabbat morning. Please check with the shul you wish to attend for which services attendance can be recorded. Not all shuls will be offering to collect points at both services. You can only record attendance for 1 service per week, so you cannot record attendance for Friday night AND Shabbat morning on the same week



EHRIS Young Families is our Facebook page specially dedicated to all who are starting their Jewish adventure with an under 8 in the family. It lists our events as they are planned.

Web page - <https://www.ehrs.uk/youngfamilies/>

E-mail youngfamilies@ehrs.uk to receive weekly updates of all that's going on.