



Edgware & Hendon
Reform Synagogue
ק"ק לדור ודור

EHRS GETS THE POINT!

An information evening for parents on collecting CRP points for secondary Jewish school applications

Why do we collect?

The CRP is a method of establishing whether the child/family practices the three pillars of the Jewish faith. Prayer, education and acts of kindness.

Collecting CRP points allows you to prove that you are eligible for a faith place at the schools you are applying to that require a completed CRP form.

Jewish schools set the admissions policy and confirm which applicants have satisfied the Jewish practice criteria. Those wishing to be considered as priority applicants for available places need to obtain a certificate establishing religious practice (CRP), based on the child's synagogue attendance, Jewish education and/or family communal activity.



[Useful website: Secondary School Admissions - Partnerships for Jewish Schools \(pajes.org.uk\)](http://pajes.org.uk)

How does it work?

Jewish day schools all require the completion of a CRP (Certificate of Religious Practice) form for admission which is dependent on collecting points for service attendance, Jewish education or volunteering in the Jewish community. Each school has its own unique requirements

Registering - We ask you to register by emailing us at education@ehrs.uk that you are collecting points through EHRS and we will support you by assigning you a Shabbat Passport

Attendance - We are very happy to help you collect CRP points to confirm you have attended services at EHRS. We will ask you to collect stickers for services attended in your child's individual Shabbat Passport. The Passport will be assigned to you at your first attendance, then kept at the Shul for safe keeping!

Signing off - The final stage is to get back in touch with us and we will arrange for you to meet with a member of our clergy team who will use this Shabbat Passport to confirm your attendances required by the schools and will be delighted to speak with you and sign your form.

Where do I collect?

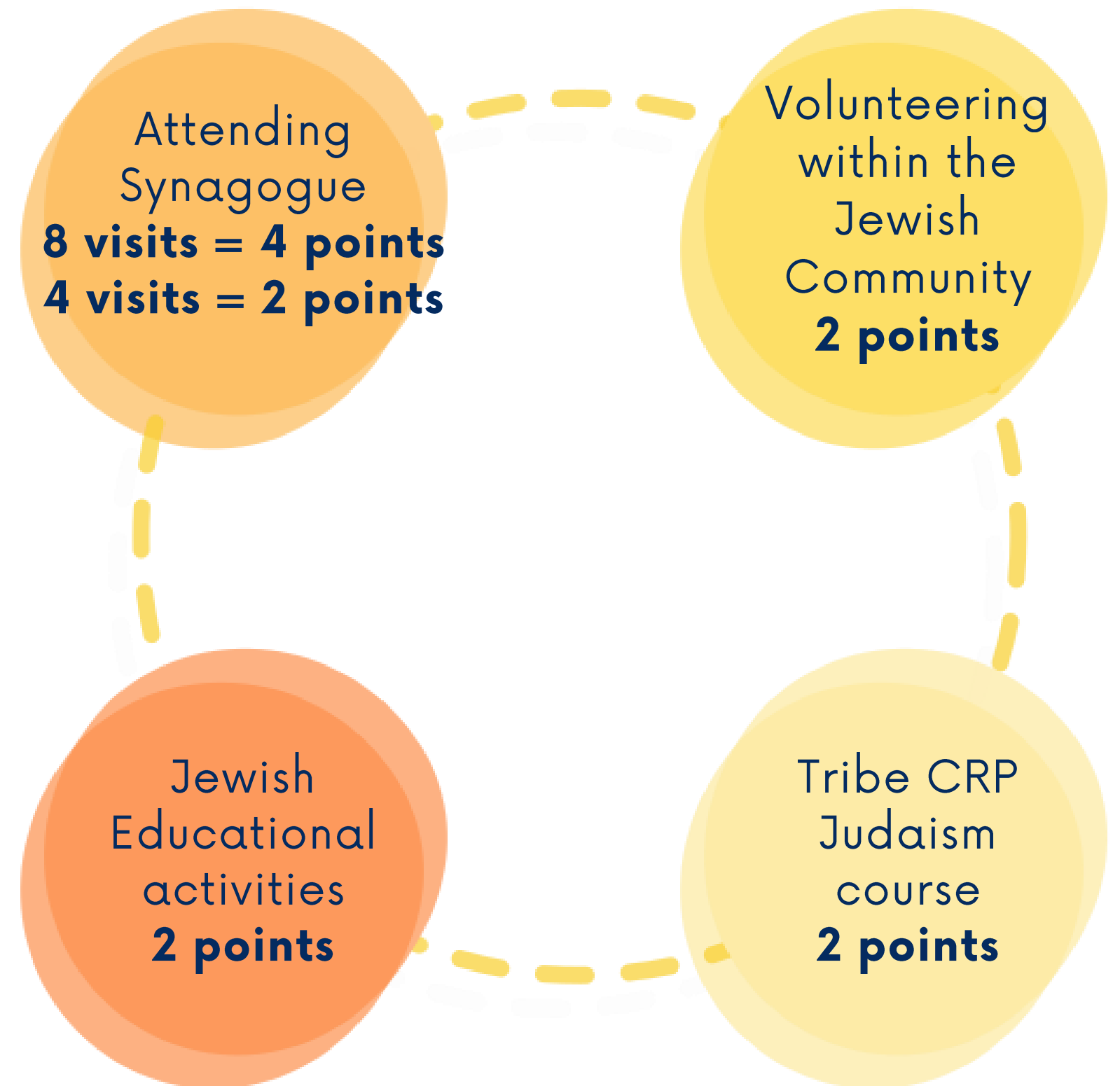
Please note some schools ask for 4 points, and some ask for 6 points.

It is important that you check the CRP requirements, including the number of points needed for each school to which you are applying.

Not all schools have adopted the same CRP form.

Points can be collected from any of the following categories. All choices are optional.

There is no benefit from earning more than the required amount of points.





Edgware & Hendon
Reform Synagogue
ק"ק לדור ודור

Shabbat Passport

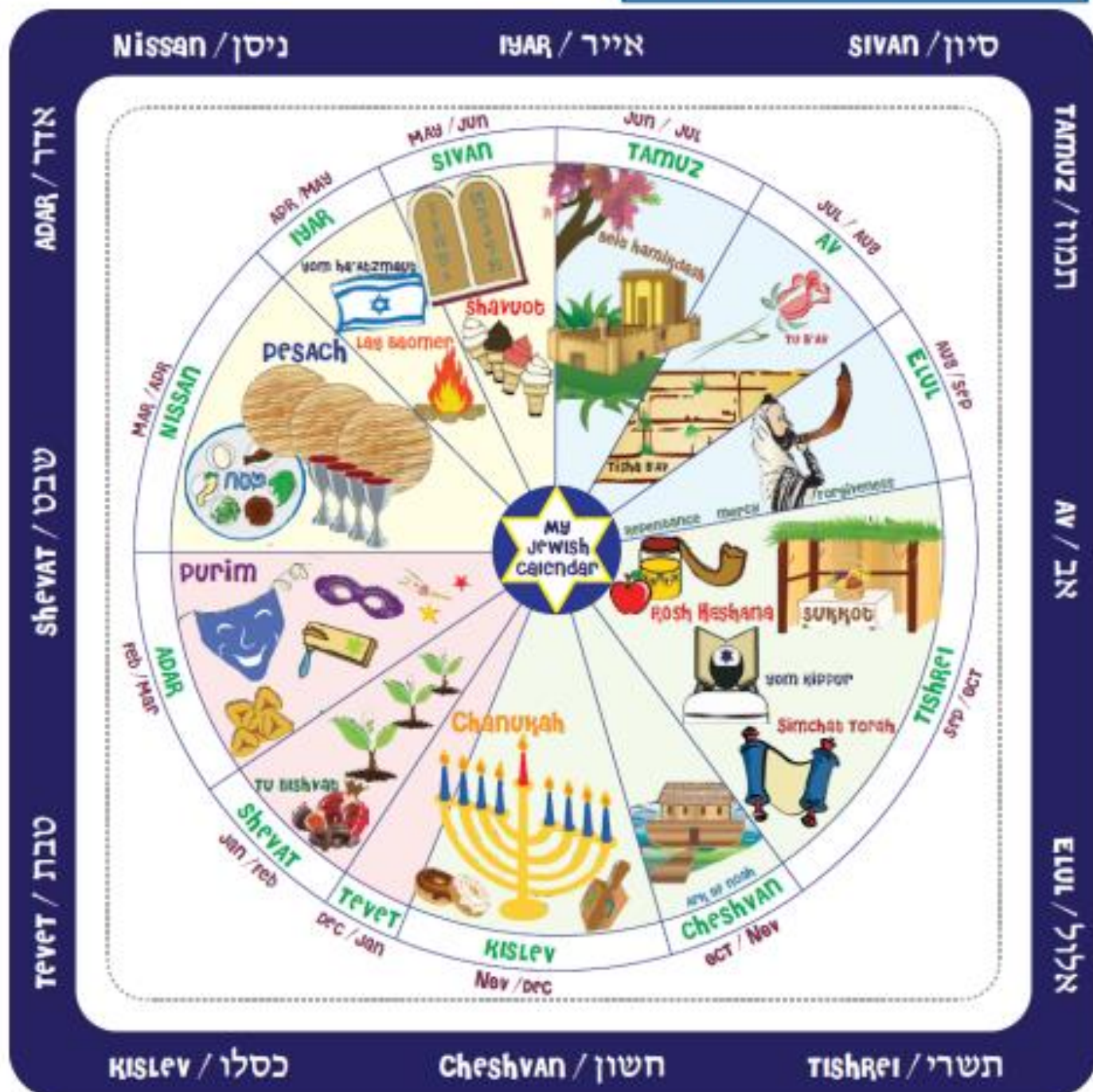


My Name:

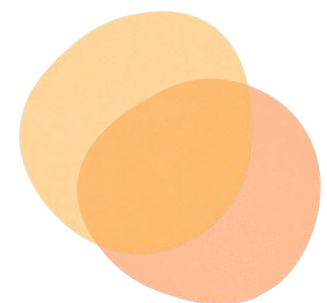
My family E-mail:

This Year is:

Names of the weekly Torah portions
First portion in a book of the Torah
A portion that in some years is joined to another portion



1) B'reishit (Genesis)	2) Noach	3) Lech L'cha
4) Va-yeira	5) Chayyei Sarah	6) Tol'dot
7) Va'yeitzei	8) Va-yishlach	9) Va-yeishev
10) Mikkeitz	11) Va-yiggash	12) Va-y'chi
13) Sh'mot (Exodus)	14) Va-eira	15) Bo
16) B'shallach	17) Yitro	18) Mishpatim



When can I collect?



Sixth form applications are due in mid to late January but can differ between schools.

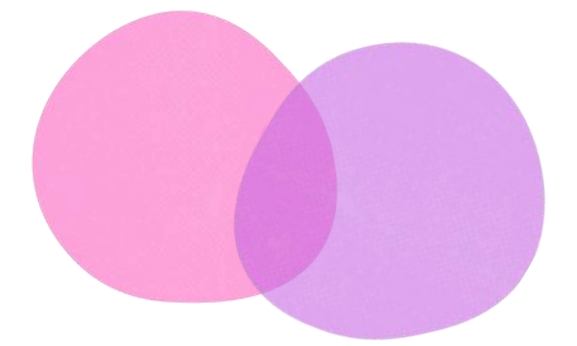
Please note that Admissions and CRP requirements differ from school to school.

It is very important to check each school's website for their admissions policy to understand what is required.

United Schools CRP Timetable

Date	Reception/Primary application	Year 7 applications	Sixth Form applications
01/11/2022	Earliest date for participating in Volunteering and Jewish Education projects		
05/04/2024	Recording shul attendance commences		
June - July 2024	Tribe CRP Judaism Course at Borehamwood Shul. See Tribe website for more details		
26/10/2024		Last week to record shul attendance	
31/10/2024		Last date for Volunteering and participation on Jewish Education programmes	
31/10/2024		Deadline for applications to schools	
11/01/2025	Last week to record shul attendance		Last week to record shul attendance
15/01/2025	Last date for Volunteering and participation on Jewish Education programmes		Last date for Volunteering and participation on Jewish Education programmes
15/01/2025	Deadline for applications to schools		
Late Jan / Early Feb 2025			Deadline for applications to Sixth Form (check with the school you are applying to)
February / April 2025	Places offered in February		Conditional places offered in April

The School Criteria



YEAR 7

You need to apply to your Local Council where you live for Year 7 school places, even if the school is out of your borough.

Application deadline for Year 7 in 2025 is before 31 October 2024

(but check school website as all slightly different deadline dates in October, but most the last week).

You need to collect THREE forms

1. Common Application Form (CAF) from your local authority website between 1 September and 31 October
2. Supplementary Information Form (SIF) available on school website
3. Certificate of Religious Practice (CRP) available on school website

YEAR 12

For Year 12 apply directly to the school and check school website as all slightly different for internal and external applicants.

You will need to complete a CRP form and the school application form.

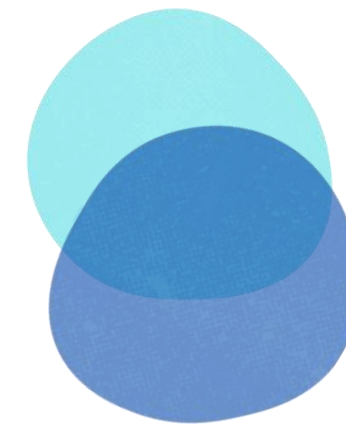
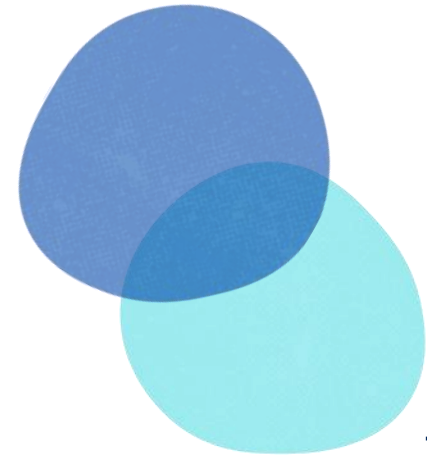


GOOD TO KNOW!

The schools advise that if you wish to send your child to Yavneh College for example, you should rank Yavneh College as your first choice on the CAF. None of the schools you apply to will know the order in which you rank them. They play no part in the selection process, that is the Local Authority only.

Don't forget to make copies of all the forms you submit, keep a look out for confirmation emails and keep your log in reference safe!

JCoSS



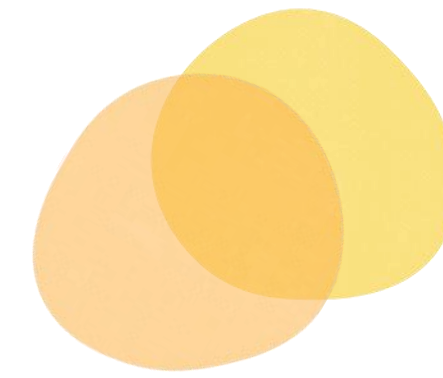
These provisions apply to all new applications, including admissions to Year 7 or Year 12 for September 2025.

- In accordance with the Admissions Code and in common with all schools, places are first allocated to children who have an Education, Health and Care Plan (EHCP). Parents wishing to apply for such a place, including all places in the Pears Special Resource Provision (PSRP), must do so through their Local Authority

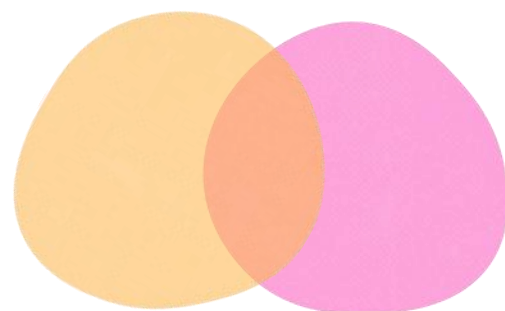
Collecting CRP Points

- You qualify if you or your child have attended at least **4 actual synagogue services in the six months** prior to your application
- **If Yes:** You do not need to complete Section B or C
- **If No:** you must satisfy section either section B – Has your child been engaged in formal Jewish education (either provided at a Jewish school, Cheder/Hebrew school (or equivalent), synagogue or by a tutor on at least 6 occasions in the six months prior to this application?
- **Or section C** - Have you or your child been involved in a volunteer capacity in any Jewish communal, charitable or welfare activity (with no financial value or practical benefit to JCoSS or any associated body) on at least 6 occasions in the six months prior to your application?

JFS



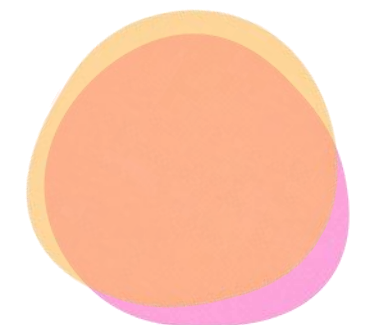
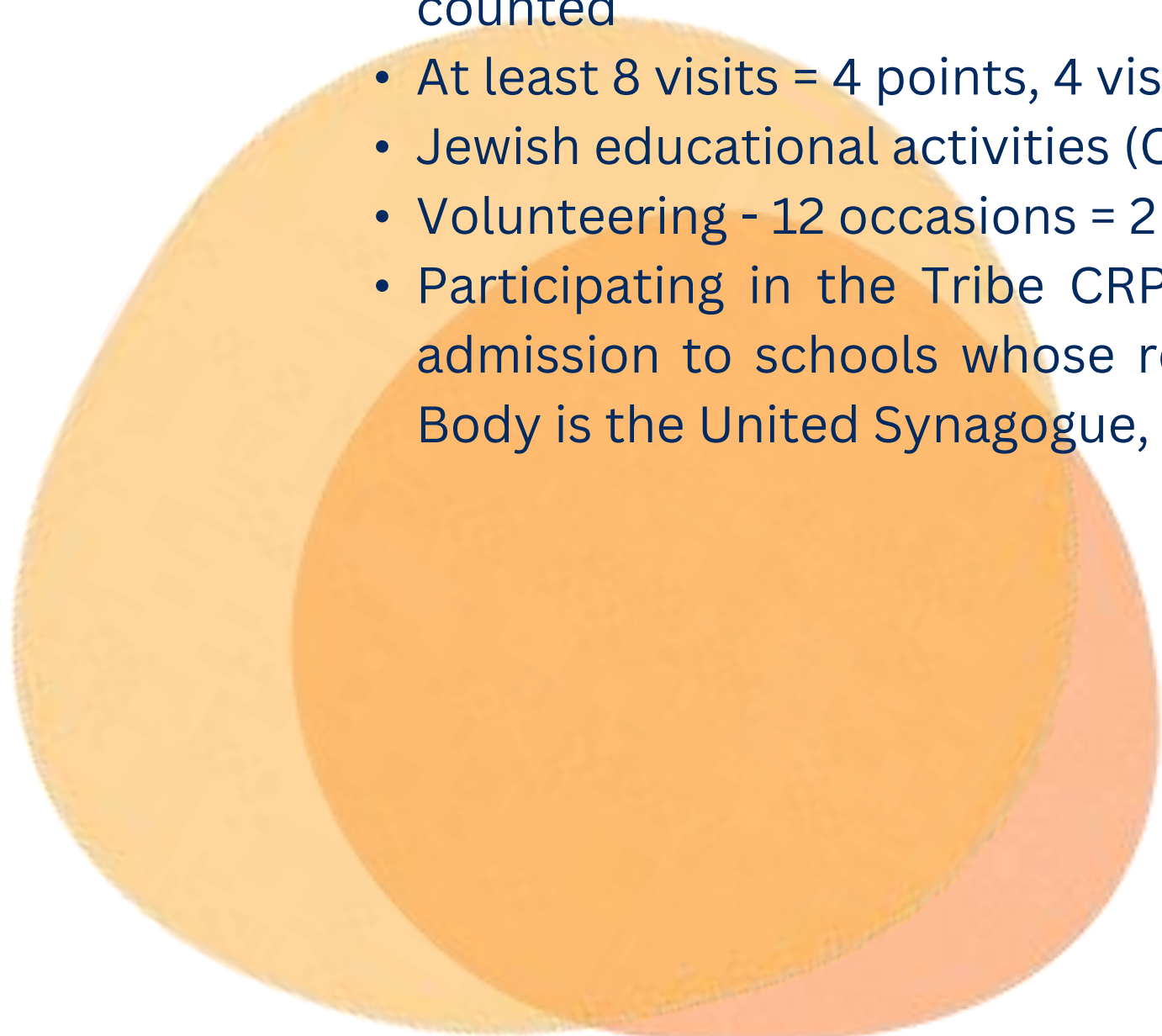
- **Need to collect 4 points overall** – There is no advantage in achieving more than 4 points for any school
- Need an application, SIF and CRP form for each school
- Synagogue attendance on Shabbat - between 21st April 2024 and 29 October 2024 - Festivals are not counted
- At least 8 visits = 4 points, 4 visits = 2 points, less than 4 times = 0 points
- Jewish educational activities (Chedar or Primary) 6 occasions = 2 points
- Volunteering - 12 occasions = 2 points
- Participating in the Tribe CRP 6-week course 2024 – This course has been specifically designed for admission to schools whose religious authority is the Office of the Chief Rabbi or whose Foundation Body is the United Synagogue, for admission in September 2024 = 2 points



Yavneh

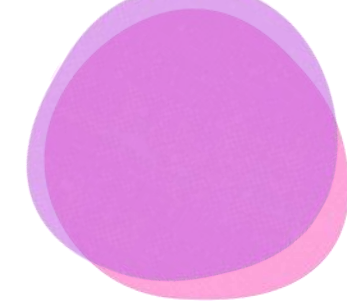


- **Need to collect 6 points overall** – There is no advantage in achieving more than 4 points for any school
- Need an application, SIF and CRP form for each school
- Synagogue attendance on Shabbat - between 21st April 2024 and 29 October 2024 - Festivals are not counted
- At least 8 visits = 4 points, 4 visits = 2 points, less than 4 times = 0 points
- Jewish educational activities (Chedar or Primary) 6 occasions = 2 points
- Volunteering - 12 occasions = 2 points
- Participating in the Tribe CRP 6-week course 2024 – This course has been specifically designed for admission to schools whose religious authority is the Office of the Chief Rabbi or whose Foundation Body is the United Synagogue, for admission in September 2024 = 2 points

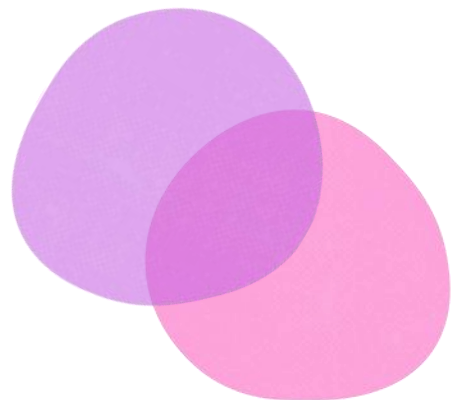


JFS & Yavneh

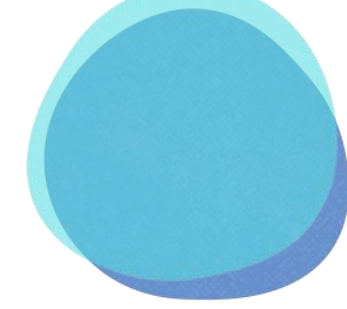
SEND Applications



- Parents of children with SEND and/or an Educational Health Care Plan are advised to apply through their Local Authority's Special Educational Needs team
- This is to ensure that the correct consultation procedure between parents, school, and SEND team at the Local Authority can take place
- In accordance with the law, schools will admit pupils with Statements of Special Educational Needs that name the school
- The schools still ask that a SIF and CRP are completed

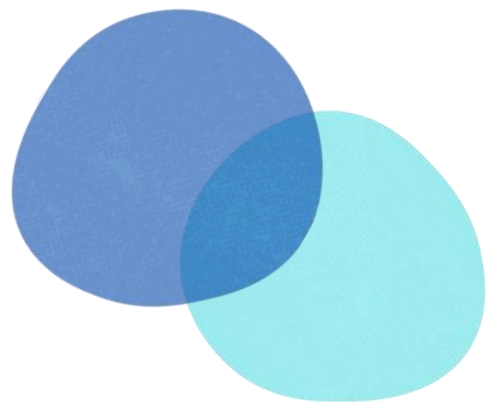


Immanuel College

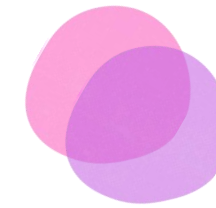


The same criteria as JFS and Yavneh but the big difference is that you can collect all 4 points by your child/ren attending a Jewish school or Cheder for at least 1 year.

- **Need to collect 4 points overall** – There is no advantage in achieving more than 4 points for any school
- Need an application, SIF and CRP form for each school
- Synagogue attendance - between 21st April 2024 and 29 October 2024 - for dates eligible for attending services on Shabbat. Festivals are not counted
- At least 8 visits = 4 points, 4 visits = 2 points, less than 4 times = 0 points
- Jewish educational activities (Chedar or Primary) - 6 occasions = 2 points
- Volunteering – 12 occasions = 2 points
- Participating on the Tribe CRP 6-week course 2024 – This course has been specifically designed for admission to schools whose religious authority is the Office of the Chief Rabbi or whose Foundation Body is the United Synagogue, for admission in September 2024 = 4 points www.tribeuk.com



OPPORTUNITIES TO COLLECT WITH EHRS



Friday night OR Saturday morning service (6.30pm on a Friday and 10.30am on a Shabbat morning) in person



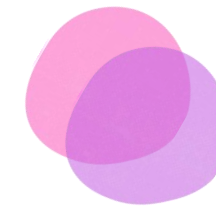
Parallel services that takes place at the synagogue on Shabbat

Shabbat Shirah, musical family service

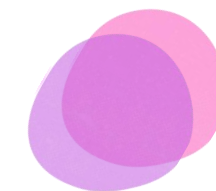
- 2nd Shabbat of the month

Build a Bible, children's service

- 3rd Shabbat of the month



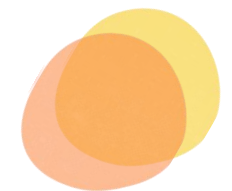
Parent volunteering (CST, Uniform groups, Community Care). Not a one-off occasion, usually at least 12 occasions of volunteering. Best to check your CRP form for the requirements



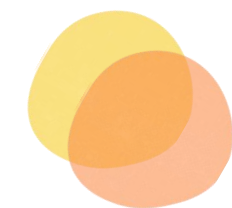
Your child's attendance at Orot



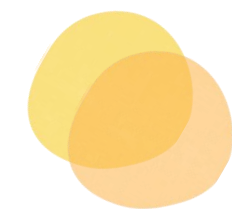
Offering Reform environment and learning, creative and non-judgemental



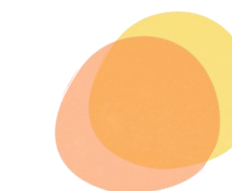
Reform community, from generation to generation



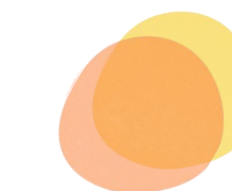
Families activities and events for all ages



Supporting challenges with Jewish school SRE etc.



Youth clubs, holiday schemes and uniform groups



Jewish life

EHR'S WIDER SUPPORT FOR JEWISH EDUCATION



GOOD TO KNOW!

PaJeS (Partnerships for Jewish Schools) is at the forefront of Jewish education in the UK.

We collaborate directly with schools and also with the government and other stakeholders.

<https://www.pajes.org.uk/>



Q&A

What are the four CRP sections?

1. Shul attendance on Friday night or Shabbat morning
2. Jewish educational activities
3. Voluntary Jewish communal, charitable or welfare activities
4. Completing the Tribe CRP Judaism course, a specially prepared course that is approved by the Office of the Chief Rabbi.

(Each section of the form has its own specified criteria that must be fulfilled and period of time in which it must be completed)

Where can I get the CRP forms from?

They will be available from each school's office and/or website and the school's local authority

Who needs to have participated in or attended at a particular activity to complete the sections of the form, parent/guardian or child?

For options 1-3 (Shul attendance, Education, Volunteering) at secondary level, only the child's participation is to be recorded, whereas at nursery and primary, it is the child and/or their parent/guardian.

I am not sure about volunteering. What are the options?

You could consider volunteering for a Jewish communal organisation or charity, and many of these organisations are always open to accepting more volunteers. You can also volunteer for your local synagogue, by being on a rota, taking part in their care activities, or through US Chesed. You cannot, however, volunteer for any school you are applying to, for the United Synagogue Head Office or the Office of the Chief Rabbi. For more ideas and suggestions please look at the Jewish Volunteer Network website and the US Chesed pages on the US website.

Examples of options: <https://www.theus.org.uk/category/us-chesed>

Please note that if you are volunteering this cannot be a one-off occasion, please check your school's CRP form. If you would like volunteer to be on rota with EHRS Security please email josh.kettle@ehrs.uk

What if my child already has a sibling in the school?

Each child must earn their own CRP points for applications to schools.

What counts as Jewish Education for the section 'Participating in Jewish Educational activities'?

Attendance at Shiurim, Jewish nurseries, Jewish primary schools and Jewish adult educational courses are all examples of accepted educational activities. Examples of options: <https://www.theus.org.uk>



Q&A

What counts as Jewish Education for the section 'Participating in Jewish Educational activities'?

Attendance at Shiurim, Jewish nurseries, Jewish primary schools and Jewish adult educational courses are all examples of accepted educational activities. Examples of options: <https://www.theus.org.uk>

What is the Tribe CRP Judaism Course?

The course is now run at Borehamwood Shul by Tribe facilitators and the community leaders. The course is open to all applicants from any community. It consists of six sessions of 45 minutes, covering topics relevant to Jewish customs and practices, festivals, kashrut, etc. All six sessions need to be completed in order to satisfy this section of the CRP form. For primary applications, the parent/guardian must attend the course, and for secondary, the parent/guardian and child should attend. Apply directly to Tribe: <https://www.tribeuk.com/article/crp-2023>

When can I collect points from attending shul?

You can collect points from attending shul on a Friday night OR Shabbat morning. Please check with the shul you wish to attend for which services attendance can be recorded. Not all shuls will be offering to collect points at both services. You can only record attendance for 1 service per week, so you cannot record attendance for Friday night AND Shabbat morning on the same week.

What is the process for applying to Sixth Form?

The deadline for Sixth Form applications varies from school to school. You must complete the Year 7+ CRP form, but rather than October 31st being your deadline, you are able to continue collecting points until January 2025. Please check with the school you are applying to for details of their date for application and any particular CRP forms that should be used.

When are offers made?

The first round of offers for all London state schools takes place each year on 1st March. You will be told by your Local Authority which school your child has been allocated on that day. If you have applied online you will be notified as to when the system is available for you to view your offer.

Who makes the decisions – the school or the local authority?

The formal offer of a place comes from your local authority. The school sets the admissions policy, and confirms which applicants have satisfied the Jewish practice criteria, but plays no part in the selection process. Nor do schools know where parents have put them on their list of preferences.



Q&A

Who makes the decisions – the school or the local authority?

The formal offer of a place comes from your local authority. The school sets the admissions policy, and confirms which applicants have satisfied the Jewish practice criteria, but plays no part in the selection process. Nor do schools know where parents have put them on their list of preferences.

I know many Jewish schools are oversubscribed. What should I do to maximise my child's chance of a place?

The best and only advice is to list the schools in the order you genuinely want them, and then sit tight and remain hopeful. The system allocates places on the basis of the preferences parents put on their Common Application Form. If you try to play the system, or put a school you don't really want higher up because you think you have a better chance, you do not get any advantage and it simply distorts the process for you and for everyone. This is one of the main reasons for delays and unhappiness in the admissions system.

Once your form is submitted, there is nothing further that you can or need to do.

I've heard about several "rounds" of offers. What does that mean?

After offers are made on 1st March, there is always some 'movement'. Some families decide to go to private schools, or go abroad, or move house, and this frees up the place they were allocated. This means that this place can be offered to someone who put the school as their first preference but who was allocated their second choice school, for example. This, in turn, means there is a space at the second choice school that can be offered to someone who put this school as their first preference but was allocated another school. As a result, there are often quite a few places that arise after 1st March as all this shuffling happens – and these are the additional 'rounds' of offers.

When are the "rounds"? How does the waiting list work?

Schools tend to make a fresh round of offers every few weeks, if there are places to offer, however this varies between local authorities. It is quite common for 30 or more places to become available in this way for each school. If the offer you receive is from a school you put lower down your list, your child's name can remain on the waiting list of your first choice of school automatically.

The schools and their local authorities maintain a waiting list for places that become available after 1st March. The first round of offers have to be accepted or rejected by 15th March. When the local authorities receive this information they update each child's status on their system. Each school cross-checks their list of available places with their local authority and then offer places according to the school's admissions policy to those on the waiting list. If your child's name is not selected it will remain on a school's waiting list into September unless you tell the school otherwise. Schools will usually try to update you from time to time on the status of the waiting list.